

SP-5B10 Power Box Module

SP5000 SERIES



Features:

- Enhanced maintenance process.
- New modular design
- Change screen size with easy "snap on box module"
- Programmable with GP Pro EX v4.0 or greater or with BLUE software*
- Enhanced Connectivity: 2 Ethernet ports, 2 COM ports, 2 Type A, USB ports, 1 mini USB, AUX Interface

Performance Specifications

Models	SP-5B10 Power Box	
Operating System	Real Time OS	
Application Memory	SD card	
Backup Memory	NVRAM 512 KB	
Interfaces	Serial	COM1 RS-232C/422/485, Data Length: 7 or 8 bits, Stop Bit: 1 or 2 bits Parity: None, odd, or even, Data Transmission Speed: 2,400/1,200/115,200bps Connector: D-Sub 9 pin (plug)
		COM2 RS-232C/422/485, Data Length: 7 or 8 bits Stop Bit: 1 or 2 bits Parity: None, odd, or even Data Transmission Speed: 2,400(1,200)...115,200 bps, 187,500bps (MPI) Connector: D-Sub 9 pin (plug)
	Ethernet	Standard: IEEE802.3i/IEEE802.3u/IEEE802.3ab, 10BASE-T/100BASE-TX/1000BASE-T Connector: Modular jack (RJ-45) x 2
	USB	Type A (V2.0) x2, Mini B (V2.0) x1
	SD Card	SD Card Slot (System) x 1, SD Card Slot (Storage) x 1
	Audio Output	Speaker Output: 300mW (Rated Load: 8Ω, Frequency : 1kHz) LINE Output: Rated load: 10kΩ or more Connector: 2-piece terminal block (AUX) x 1

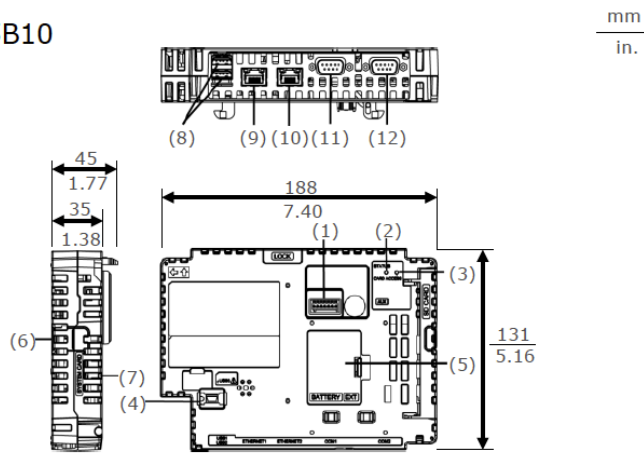
*1: Field bus interface options will be launched around 4Q, 2014.
*Blue software to be released in 2015

General Specifications

Models	SP-5B10 Power Box
Input Voltage	12Vdc (Supply from Display Module)
Power Consumption	25W (max), 12.5W or less (when power is not supplied to external devices)
Surrounding Air Temperature	0...60 °C [32... 140 °F]
Storage Temperature	-20 to +60 °C (-4 to +140 °F)
Certifications	UL508, UL/c-UL, CSA C22.2 No142, CE, RoHS, GOST-R, KC
Ratings	CSA C22.2No213, ANSI/ISA 12.12.01, EN61000-6-4, EN61000-6-2
Surrounding Air and Storage Humidity	10%...90% RH (Non condensing, wet bulb temperature 39 °C [102.2 °F] or less)
Dust	0.1 mg/m3 (10-7 oz/ft3) or less (non-conductive levels)
Pollution Degree	For use in Pollution Degree 2 environment
Corrosive Gas	Free of corrosive gases
Atmospheric Pressure (Operating Altitude)	800...1,114 hPa (2,000 m [6,561 ft] or lower)
Vibration Resistance	IEC/EN 61131-2 compliant
Shock Resistance	IEC/EN 61131-2 compliant
Electrostatic Discharge Immunity	Contact Discharge Method: 6 kV (IEC/EN 61000-4-2 Level 3)
Weight	0.9kg[1.98lb] or less
External Dimensions	W188xH131xD45m[W7.4 x H5.16 x D1.77 in.]
Warranty	

External Dimensions

SP-5B10



- (1) Auxiliary Output/Speaker Output Interface (AUX) (2) Status LED (3) Card Access LED (4) USB (mini-B) Interface (5) Expansion Unit Interface Cover (EXT) (6) Storage Card Cover (7) System Card Cover (8) USB (Type A) Interface (9) Ethernet Interface (ETH1) (10) Ethernet Interface (ETH2) (11) Serial Interface (COM1) (12) Serial Interface (COM2)

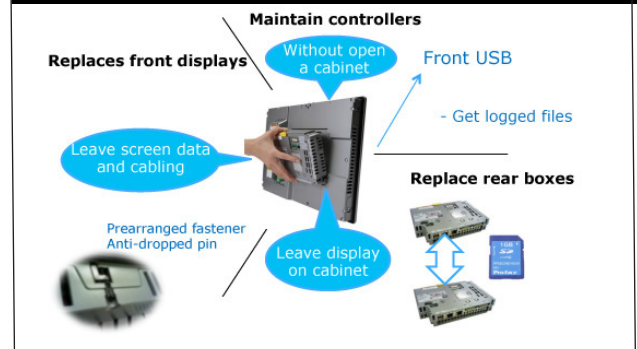
Ordering Information

Type	Model Numbers	Description
Power Box	PFXSP5B10	For SP5000 Series Power Box Ethernet I/F x 2, COM I/F x 2, USB A I/F x 2, USB mini-B I/F, SD Card I/F x 2, AUX I/F, Expansion Unit I/F

Options

Part Number	Product Name	Description
PFXZCDCNAUX1	AUX Connector	AUX connector required in case an external output is used (5 pcs/set).
PFXZCDS1GC61	SD Memory Card (1 GB)	SD Memory Card (1 GB, SLC, Class 6) for System Card

Modular Design and Easy Maintenance



Model Number Configuration

Box Module

PFXSP5 B **
(1) (2)

(1) Module Type		(2) Class	
B	BOX	40	Open
		10	Power

Display Module

PFXSP5 * 00 * * D
(3) (4) (5) (6)

(3) Size		(4) Resolution		(5) Touch Panel		(6) Power Supply	
7	15 inch	T	TFT	P	Premium (Multi)	D	DC
6	12 inch	W	Wide TFT	A	Advanced (Analog)		
5	10 inch						
4	7 inch						

K.P.T. MACHINERY (1993) Co., Ltd.

259/83 Soi Phiboonves, Sukhumvit 71 Rd., Phrakanong-nur, Wattana, Bangkok 10110

E-mail: sales@kpt-group.com / marketing@kpt-group.com

Tel: 02-391-3030 Fax: 02-391-3021 www.kpt-group.com